

A modern outdoor patio set is displayed on a wooden deck. The set includes a light green rectangular table, a matching green bench, and a small red metal stool. A red rug with large red circles is laid out on the deck. The background features a dense forest of tall trees and a string of warm-toned outdoor lights hanging above the seating area. Several potted plants, including tall grasses and leafy green plants, are arranged around the furniture.

# BRINK & CAMPMAN

## OUTDOOR COLLECTION '25





**B&C** we make quality rugs since 1897





# Index

<b>Zona</b>	Zona Stitch	4
	Zona Line	6
	Zona Block Stripe	8
	Zona Check	8
<b>Lace</b>	Lace	10
	Lace Tricolore	12
<b>Deck</b>	Deck spring green	14
	Deck electric blue	14
	Deck charcoal	14
<b>Habitat</b>	Festival Stripe	18
	Festival Dots	20
	Festival Round	22
	LaVida	24
	Aura	26
<b>Brands</b>	Orla Kiely	30
	Marimekko	38
	Ted Baker	40
	Scion	46
	Harlequin	56
	Sanderson	66
	Morris & Co.	76
	Laura Ashley	82
	Overview	90



# Zona | Stitch

flatweave  
100% recycled PET yarns  
total weight: ca 1650 gr/m²  
no pile due to flatweave structure

available sizes:  
67 x 230 23.3"x 90.5"  
70 x 300 27.5"x 118.11"  
140 x 200 4'7"x 6'7"  
160 x 230 5'3"x 7'6"  
200 x 280 6'7"x 9'2"  
250 x 350 8'2"x 11'6"  
no custom sizes

water resistant & easy to clean  
reversible

The ZONA series brings subtle luxury to your lounging haven. With these rugs, you define the space where relaxation takes center stage — a tranquil sanctuary in natural hues. Woven in a flat weave by skilled craftsmen, these outdoor rugs exude elegance. The irregular yarns, spun from recycled PET bottles, embody the art of upcycling, turning waste into refined beauty.



**Zona Stitch terra**  
497303



**Runner**  
497303



**Zona Stitch olive**  
495707



**Runner**  
495707







# Zona | Line

flatweave  
100% recycled PET yarns  
total weight: ca 2250 gr/m<sup>2</sup>  
no pile due to flatweave structure

available sizes:  
67 x 230 23.3" x 90.5"  
70 x 300 27.5" x 118.11"  
140 x 200 4'7" x 6'7"  
160 x 230 5'3" x 7'6"  
200 x 280 6'7" x 9'2"  
250 x 350 8'2" x 11'6"  
no custom sizes

water resistant & easy to clean  
reversible

The artisanal allure of this rug ZONA Line is achieved through the combination of classic stripes with a rustic feel. The irregular threads and the craftsmanship of hand-weaving form an intriguing blend with the recycled PET yarns.



**Zona Line sesame**  
497601



**Runner**  
497601



**Zona Line charcoal**  
497605



**Runner**  
497605



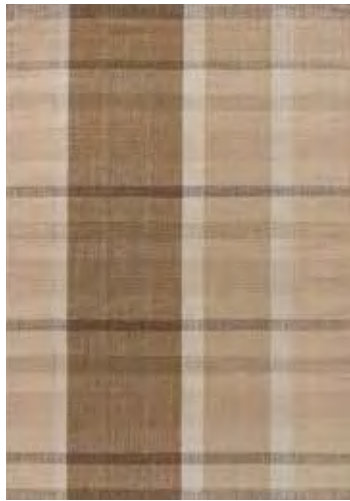
# Zona | Block Stripe & Check

flatweave  
100% recycled PET yarns  
total weight: ca 2250 gr/m<sup>2</sup>  
no pile due to flatweave structure

available sizes:  
67 x 230   23.3" x 90.5"  
70 x 300   27.5" x 118.11"  
140 x 200   4'7" x 6'7"  
160 x 230   5'3" x 7'6"  
200 x 280   6'7" x 9'2"  
250 x 350   8'2" x 11'6"  
no custom sizes

water resistant & easy to clean  
reversible

What adds to the charm of these rugs is their dual-sided grace, providing versatility that extends their lifespan. Imagine yourself serenely seated in the soft glow of the late evening sun, surrounded by the timeless allure of your perfectly adorned lounge spot. Can you picture the tranquility?



**Zona Block Stripe cashew**  
497501



**Runner**  
497501



**Zona Check denim**  
497408



**Runner**  
497408







# Lace

handwoven  
100% recycled PET yarns  
total weight: ca 3050 gr/m<sup>2</sup>  
total height: ca 15 mm

available sizes:  
140 x 200 4'7" x 6'7"  
160 x 230 5'3" x 7'6"  
200 x 280 6'7" x 9'2"  
250 x 350 8'2" x 11'6"  
custom sizes on request

water resistant & easy to clean  
reversible



**Lace white sand**  
497009



**Lace sage grey-white sand**  
497201



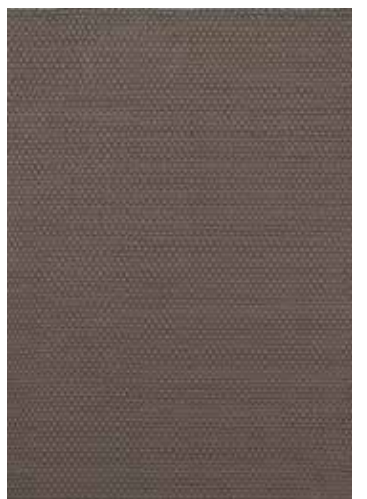
**Lace golden mustard**  
497006



**Lace golden mustard-grey taupe**  
497217



**Lace thyme-pine**  
497207



**Lace grey taupe**  
497004



# Lace | Tricolore

handwoven  
100% recycled PET yarns  
total weight: ca 3050 gr/m<sup>2</sup>  
total height: ca 15 mm

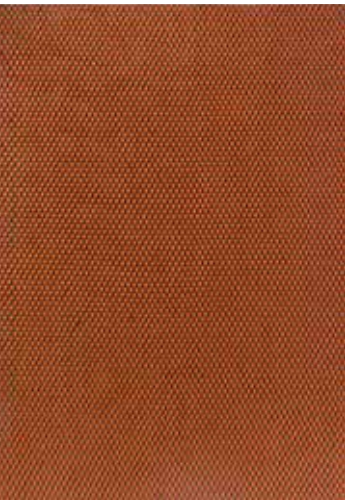
available sizes:  
140 x 200 4'7" x 6'7"  
160 x 230 5'3" x 7'6"  
200 x 280 6'7" x 9'2"  
250 x 350 8'2" x 11'6"  
custom sizes on request

water resistant & easy to clean  
reversible

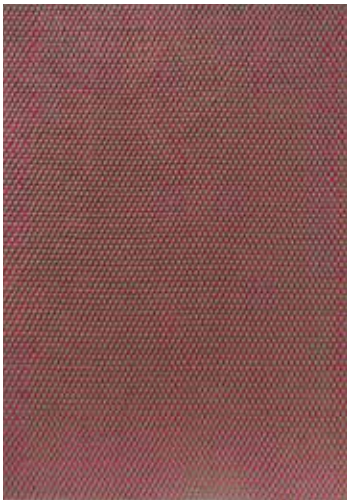
The successful LACE series has been complemented by the LACE tricolore. Next to the subdued colour palette we have added three refined colourways. Beautiful colour combinations reminiscent of sun-drenched long evenings or funky parties.



Lace white-sand-mango  
496901



Lace terra-rust-green  
496903



Lace thyme-grey-pink  
496904







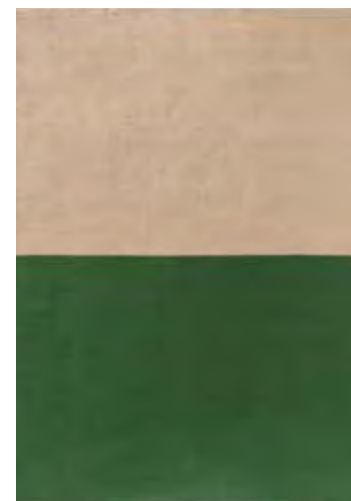
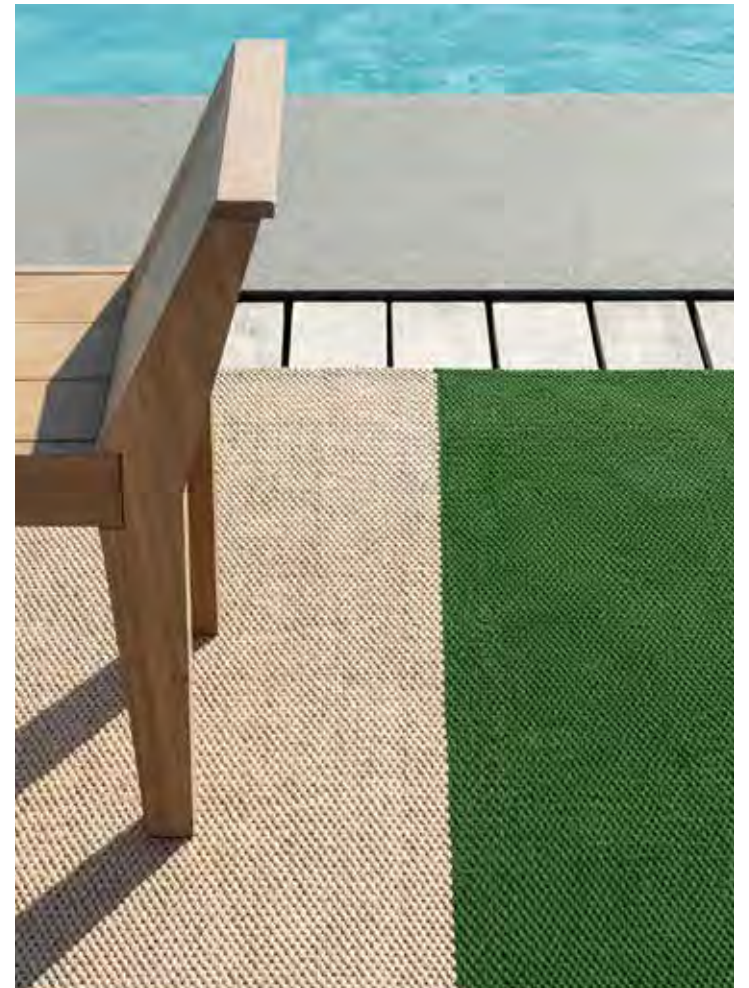
# Deck

handwoven  
100% recycled PET yarns  
total weight: ca 2030 gr/m<sup>2</sup>  
total height: ca 10 mm

available sizes:  
140 x 200 4'7" x 6'7"  
160 x 230 5'3" x 7'6"  
200 x 280 6'7" x 9'2"  
250 x 350 8'2" x 11'6"  
custom sizes on request

water resistant & easy to clean  
reversible

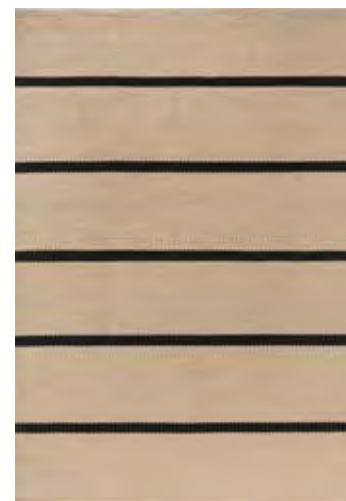
Let the spring and summer come and see the DECK in dazzling electric blue that reminds you of the Mediterranean sea, or the DECK spring green in a very vibrant green! The textures are soft to the touch and consist of woven ropes that form an exciting pattern.



**Deck spring green**  
496607



**Deck electric blue**  
496708



**Deck charcoal black**  
496805





Let's go outside, with our uplifting in-outdoor rug collection. Bringing you bold, durable and weather-proof rugs for your garden, terrace or balcony, which can also easily be used inside your home. Create a relaxing atmosphere for your special moments with friends and family with inviting designs from our own design studio and statement rugs created in partnership with our brands. Perfect for all those long summer days. Enjoy!



# Habitat | Festival stripe

handtufted  
100% recycled PET yarns  
total weight: ca 2600 gr/m<sup>2</sup>  
total height: ca 11 mm

available sizes:  
140 x 200 4'7" x 6'7"  
160 x 230 5'3" x 7'6"  
200 x 280 6'7" x 9'2"  
250 x 350 8'2" x 11'6"  
no custom sizes

water resistant & easy to clean

The sunnier the season, the more colours come to life! Imagine a vibrant palette of rich, saturated hues embracing the bold collection of outdoor rugs – FESTIVAL. Get ready to infuse your outdoor space with a splash of fun and personality, making every moment a celebration of style and sunshine!



**Festival Stripe yellow**  
496516



**Festival Stripe orange**  
496513



**Festival Stripe blue**  
496518







# Habitat | Festival dots

handtufted  
100% recycled PET yarns  
total weight: ca 2600 gr/m<sup>2</sup>  
total height: ca 11 mm

available sizes:  
140 x 200 4'7" x 6'7"  
160 x 230 5'3" x 7'6"  
200 x 280 6'7" x 9'2"  
250 x 350 8'2" x 11'6"  
no custom sizes

water resistant & easy to clean

Get ready to groove with our FESTIVAL series, where every rug is hand-tufted by skilled artisans who pour their crafty magic into each piece. What makes it even cooler? The yarns used are crafted from recycled PET bottles – a fab contribution to recycling awesomeness!



**Festival Dots olive green**  
495817



**Festival Dots red**  
495800



# Habitat | Festival round

handtufted  
100% recycled PET yarns  
total weight: ca 2600 gr/m2  
total height: ca 11 mm

available sizes:  
Ø 150   Ø 4'11"  
Ø 200   Ø 6'7"  
no custom sizes

water resistant & easy to clean

Picture your seating area transformed into a lively burst of joy on your garden, terrace, or balcony, adorned with whimsical circles. Let's make your space a festival of style that's both eco-friendly and funk-tastic.



**Festival Round yellow**  
496306



**Festival Round aqua**  
496308







# Habitat | LaVida

handtufted  
100% recycled PET yarns  
total weight: ca 2600 gr/m<sup>2</sup>  
total height: ca 11 mm

available sizes:  
140 x 200 4'7" x 6'7"  
160 x 230 5'3" x 7'6"  
200 x 280 6'7" x 9'2"  
250 x 350 8'2" x 11'6"  
no custom sizes

water resistant & easy to clean

The versatile LAVIDA effortlessly complements various decor styles, allowing you to create a personalized and inviting atmosphere for your outdoor gatherings.



**LaVida**  
476801





# Habitat | Aura

handtufted  
100% recycled PET yarns  
total weight: ca 2600 gr/m<sup>2</sup>  
total height: ca 11 mm

available sizes:  
140 x 200 4'7" x 6'7"  
160 x 230 5'3" x 7'6"  
200 x 280 6'7" x 9'2"  
250 x 350 8'2" x 11'6"  
no custom sizes

water resistant & easy to clean


AURA takes inspiration from the natural world, where no shape is perfectly symmetrical. The organic shape of this rug brings a touch of elegance to your outdoor space, while creating a harmonious connection with the environment.



**Aura grey**  
477304

**Aura ochre**  
477306





In addition to our own unique B&C collection, we develop and produce collections for world-wide renowned brands in the home interior and fashion world.

Our design studio works closely with the designers of these brands to ensure that together we can create highly recognizable collections. The cooperation with these brands ensures that we can proudly offer a wide range of rugs where, just as with the B&C collection, quality and eye for detail are of great importance.



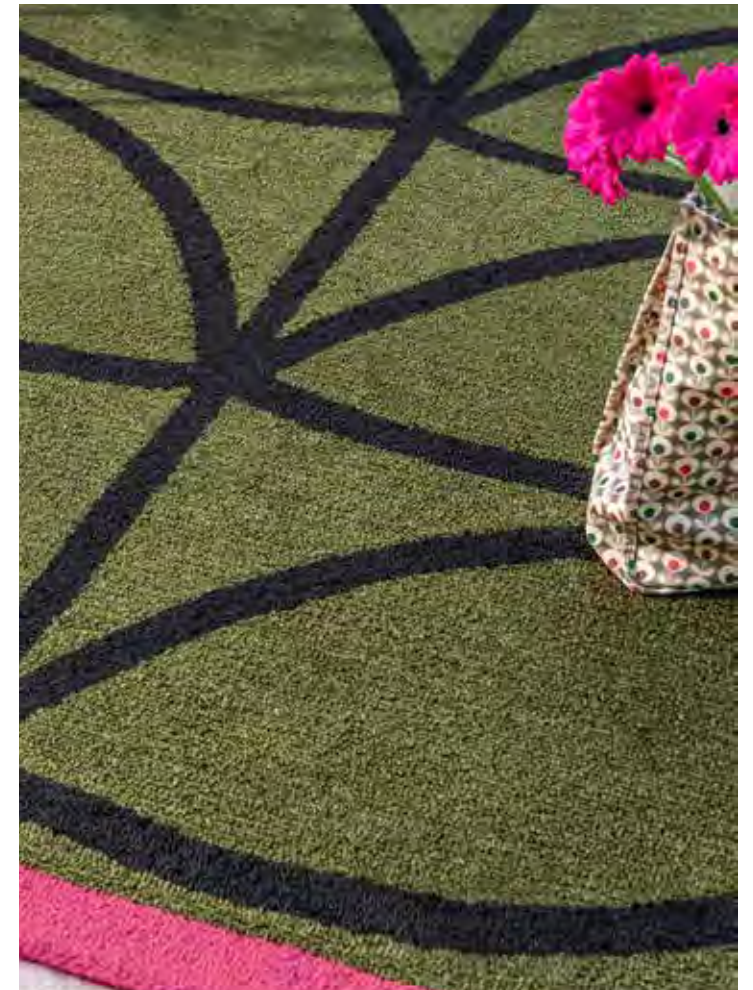
# Orla Kiely

handtufted  
100% recycled PET yarns  
total weight: ca 2600 gr/m<sup>2</sup>  
total height: ca 11 mm

available sizes:  
140 x 200 4'7" x 6'7"  
160 x 230 5'3" x 7'6"  
200 x 280 6'7" x 9'2"  
250 x 350 8'2" x 11'6"  
no custom sizes

water resistant & easy to clean

Orla Kiely has a passion for mid-century design. Often perceived as retro, the brand reinvents and aspires to newness with an ever evolving colourpalette to build modern on modernism. Designed to withstand all environments, and perfect for gardens, patios, kitchens and dining areas, these outdoor rugs add a splash of print and colour to your outdoor area.



**Linear Stem orange**  
464403



**Linear Stem olive**  
464407



# Orla Kiely

handtufted  
100% recycled PET yarns  
total weight: ca 2600 gr/m<sup>2</sup>  
total height: ca 11 mm

available sizes:  
140 x 200 4'7" x 6'7"  
160 x 230 5'3" x 7'6"  
200 x 280 6'7" x 9'2"  
250 x 350 8'2" x 11'6"  
no custom sizes

water resistant & easy to clean

Bright and contemporary, Orla Kiely's iconic SOLID STEM design adds a playful yet sophisticated touch to your outdoor setting, creating an atmosphere that's both inviting and stylish.



**Solid Stem seagrass**  
464507





# Orla Kiely

handtufted  
100% recycled PET yarns  
total weight: ca 2600 gr/m<sup>2</sup>  
total height: ca 11 mm

available sizes:  
140 x 200 4'7" x 6'7"  
160 x 230 5'3" x 7'6"  
200 x 280 6'7" x 9'2"  
250 x 350 8'2" x 11'6"  
no custom sizes

water resistant & easy to clean

—  
This STRIPY STEM rug is an Orla Kiely must-have.  
The bold, graphic scale is both retro and modern  
at the same time. Add a 1960's touch to your home!



**Stripy Stem azure**  
464308



# Orla Kiely

handtufted  
100% recycled PET yarns  
total weight: ca 2600 gr/m<sup>2</sup>  
total height: ca 11 mm

available sizes:  
140 x 200 4'7" x 6'7"  
160 x 230 5'3" x 7'6"  
200 x 280 6'7" x 9'2"  
250 x 350 8'2" x 11'6"  
no custom sizes

water resistant & easy to clean

Creating movement with its vine-like shape weaving upwards, this design uses graphic shapes inspired by sycamore tree seeds. Retro and playful, this rug is perfect for embracing a modern mid-century look in your home.



Sycamore dill  
464207



Sycamore black  
464205





# Marimekko

handtufted  
100% recycled PET yarns  
total weight: ca 2600 gr/m<sup>2</sup>  
total height: ca 11 mm

available sizes:  
140 x 200 4'7" x 6'7"  
160 x 230 5'3" x 7'6"  
200 x 280 6'7" x 9'2"  
250 x 350 8'2" x 11'6"  
no custom sizes

water resistant & easy to clean

Marimekko is a Finnish design house founded in 1951. For seventy years, the unmistakable Marimekko prints have been worn as bold badges of positivity and personal empowerment. Unikko was created by Maija Isola for Marimekko in 1964 and has since become an international icon of print design.



Unikko 60<sup>th</sup> Anniversary green  
433007







# Ted Baker

handtufted  
100% recycled PET yarns  
total weight: ca 2600 gr/m<sup>2</sup>  
total height: ca 11 mm

available sizes:  
140 x 200 4'7" x 6'7"  
160 x 230 5'3" x 7'6"  
200 x 280 6'7" x 9'2"  
250 x 350 8'2" x 11'6"  
no custom sizes

water resistant & easy to clean

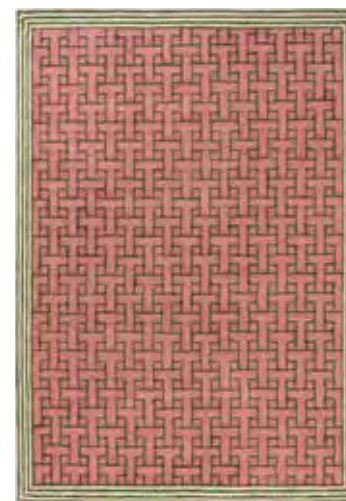
From the beginning Ted Baker has had a very clear, unswerving, focus on quality, attention to detail and a quirky sense of humour. Everything produced under the Ted Baker name has his personality woven into its very heart. This monogram rug creates a subtle yet striking visual impact, perfect for hosting unforgettable gatherings and turning any occasion into a stylish soirée.



**T Monogram light brown**  
455811



**T Monogram jade green**  
455807



**T Monogram dusted pink**  
455802



# Ted Baker

handtufted  
100% recycled PET yarns  
total weight: ca 2600 gr/m<sup>2</sup>  
total height: ca 11 mm

available sizes:  
140 x 200 4'7" x 6'7"  
160 x 230 5'3" x 7'6"  
200 x 280 6'7" x 9'2"  
250 x 350 8'2" x 11'6"  
no custom sizes

water resistant & easy to clean

Whether you have a cozy balcony, expansive patio, or lush garden, this floral rug effortlessly complements any outdoor setting. Its elegant design makes it a perfect choice for creating a chic and inviting ambiance.



**Botanical Tulip burgundy**  
455610







# Ted Baker

handtufted  
100% recycled PET yarns  
total weight: ca 2600 gr/m<sup>2</sup>  
total height: ca 11 mm

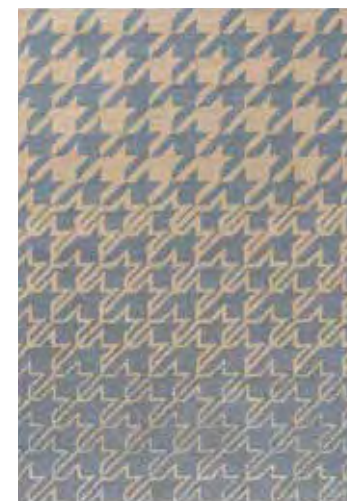
available sizes:  
140 x 200 4'7" x 6'7"  
160 x 230 5'3" x 7'6"  
200 x 280 6'7" x 9'2"  
250 x 350 8'2" x 11'6"  
no custom sizes

water resistant & easy to clean

Immerse yourself in the world of refined patterns  
and add a touch of sophistication to your outdoor  
area with this Ted Baker HOUNDSTOOTH rug.



**Houndstooth mustard**  
455706



**Houndstooth washed blue**  
455708



# Scion

handtufted  
100% recycled PET yarns  
total weight: ca 2600 gr/m<sup>2</sup>  
total height: ca 11 mm

available sizes:  
140 x 200 4'7" x 6'7"  
160 x 230 5'3" x 7'6"  
200 x 280 6'7" x 9'2"  
250 x 350 8'2" x 11'6"  
no custom sizes

water resistant & easy to clean

Scion is a proudly British designed brand that's inspired by the clean lines of Scandi design. Specialists in colour and with a shared passion for print, the team are experts in hand drawn design and playful prints. Creating uplifting designs to make you smile. The gently bending heads of ROSEHIP, interpret nature through the eyes of Scion.



Rosehip blue  
426718







# Scion

handtufted  
100% recycled PET yarns  
total weight: ca 2600 gr/m<sup>2</sup>  
total height: ca 11 mm

available sizes:  
140 x 200 4'7" x 6'7"  
160 x 230 5'3" x 7'6"  
200 x 280 6'7" x 9'2"  
250 x 350 8'2" x 11'6"  
no custom sizes

water resistant & easy to clean

Scion is a proudly British designed brand that's inspired by the clean lines of Scandi design. Specialists in colour and with a shared passion for print, the team are experts in hand drawn design and playful prints. Scion outdoor rugs create a playful connection between design and the garden with bold yet soothing designs. MOQUI features an abstract image as an uneven rock formation.



**Moqui green**  
426507



# Scion

handtufted  
100% recycled PET yarns  
total weight: ca 2600 gr/m<sup>2</sup>  
total height: ca 11 mm

available sizes:  
140 x 200 4'7" x 6'7"  
160 x 230 5'3" x 7'6"  
200 x 280 6'7" x 9'2"  
250 x 350 8'2" x 11'6"  
no custom sizes

water resistant & easy to clean

Scion is a proudly British designed brand that's inspired by the clean lines of Scandi design. Specialists in colour and with a shared passion for print, the team are experts in hand drawn design and playful prints. Scion outdoor rugs create a playful connection between design and the garden with bold yet soothing designs. DHURRIE features a simple yet effectice chevron design.



Dhurrie green  
426307



Dhurrie blue  
426318





# Scion

handtufted  
100% recycled PET yarns  
total weight: ca 2600 gr/m<sup>2</sup>  
total height: ca 11 mm

available sizes:  
140 x 200 4'7" x 6'7"  
160 x 230 5'3" x 7'6"  
200 x 280 6'7" x 9'2"  
250 x 350 8'2" x 11'6"  
no custom sizes

water resistant & easy to clean

Scion is a proudly British designed brand that's inspired by the clean lines of Scandi design. Specialists in colour and with a shared passion for print, the team are experts in hand drawn design and playful prints. Creating uplifting designs to make you smile. This bold geometric rug blends urban style with an ethnic twist.



**Nuevo blush**  
426102



# Scion

handtufted  
100% recycled PET yarns  
total weight: ca 2600 gr/m<sup>2</sup>  
total height: ca 11 mm

available sizes:  
140 x 200 4'7" x 6'7"  
160 x 230 5'3" x 7'6"  
200 x 280 6'7" x 9'2"  
250 x 350 8'2" x 11'6"  
no custom sizes

water resistant & easy to clean

RIVI features spots and stripes in a warm green, blue and grey colour palette. Bringing you a bold, durable and weather proof rug for your garden, terrace or balcony, which can also easily be used inside your home.



**Rivi kiwi**  
426908







# Harlequin

handtufted  
100% recycled PET yarns  
total weight: ca 2600 gr/m<sup>2</sup>  
total height: ca 11 mm

available sizes:  
140 x 200 4'7" x 6'7"  
160 x 230 5'3" x 7'6"  
200 x 280 6'7" x 9'2"  
250 x 350 8'2" x 11'6"  
no custom sizes

water resistant & easy to clean

Harlequin believes that our best interiors are created when they reflect who we are. Make a statement, set a mood and turn your patio, deck, or garden into a personalized haven. Each rug is a canvas of colour and creativity, allowing you to express your unique personality and style. The textures used in TREE TOPS translate beautifully onto this rug, with vibrant colour combinations blurring the lines between classic tree forms and something more dream-like.



**Tree Tops green**  
443807



# Harlequin

handtufted  
100% recycled PET yarns  
total weight: ca 2600 gr/m<sup>2</sup>  
total height: ca 11 mm

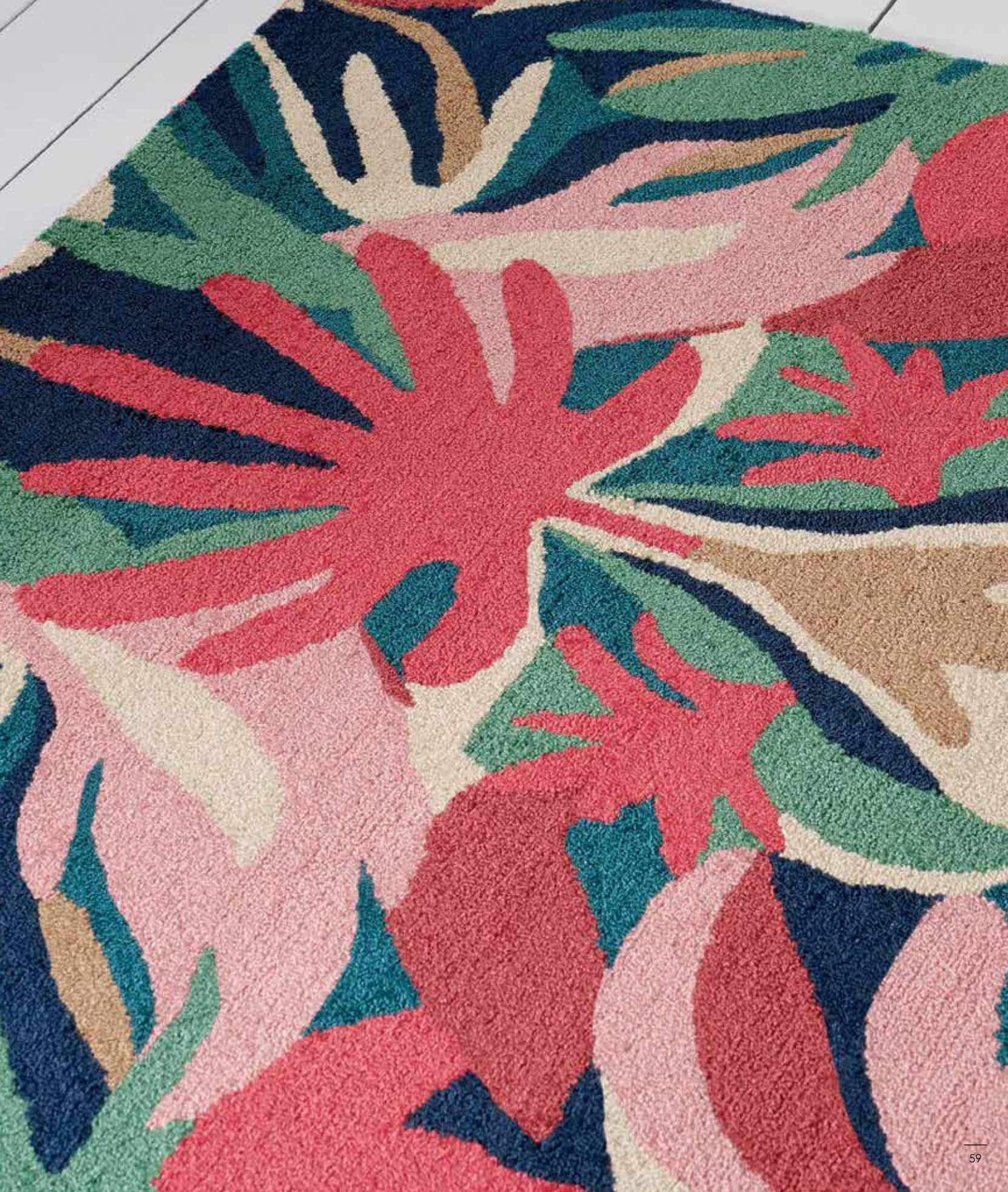
available sizes:  
140 x 200 4'7" x 6'7"  
160 x 230 5'3" x 7'6"  
200 x 280 6'7" x 9'2"  
250 x 350 8'2" x 11'6"  
no custom sizes

water resistant & easy to clean

Harlequin believes that our best interiors are created when they reflect who we are. Make a statement, set a mood and turn your patio, deck, or garden into a personalized haven. Each rug is a canvas of colour and creativity, allowing you to express your unique personality and style. Packed full of vibrant colour, this striking modern damask with hand-printed look brings your garden to life.



Melora pink  
443202







# Harlequin

handtufted  
100% recycled PET yarns  
total weight: ca 2600 gr/m<sup>2</sup>  
total height: ca 11 mm

available sizes:  
140 x 200 4'7" x 6'7"  
160 x 230 5'3" x 7'6"  
200 x 280 6'7" x 9'2"  
250 x 350 8'2" x 11'6"  
no custom sizes

water resistant & easy to clean

Harlequin believes that our best interiors are created when they reflect who we are. Make a statement, set a mood and turn your patio, deck, or garden into a personalized haven. Each rug is a canvas of colour and creativity, allowing you to express your unique personality and style. The rhythmic beats of our favourite song have inspired this statement geo that's hand painted in this MELODIC rug.



**Melodic ochre-gold**  
443606



**Melodic blue**  
443608



# Harlequin

handtufted  
100% recycled PET yarns  
total weight: ca 2600 gr/m<sup>2</sup>  
total height: ca 11 mm

available sizes:  
140 x 200 4'7" x 6'7"  
160 x 230 5'3" x 7'6"  
200 x 280 6'7" x 9'2"  
250 x 350 8'2" x 11'6"  
no custom sizes

water resistant & easy to clean

Harlequin believes that our best interiors are created when they reflect who we are. Make a statement, set a mood and turn your patio, deck, or garden into a personalized haven. Each rug is a canvas of colour and creativity, allowing you to express your unique personality and style.



Ixora emerald-palm-chartreuse  
442007







# Harlequin

handtufted  
100% recycled PET yarns  
total weight: ca 2600 gr/m<sup>2</sup>  
total height: ca 11 mm

available sizes:  
140 x 200 4'7" x 6'7"  
160 x 230 5'3" x 7'6"  
200 x 280 6'7" x 9'2"  
250 x 350 8'2" x 11'6"  
no custom sizes

water resistant & easy to clean

TRATTINO is an all-over vibrant design created with short brushstrokes inspired by the colours and bold brushstrokes of the early 20<sup>th</sup> Century's Fauvist art movement. This bold print makes a statement in its own right.



**Trattino sea glass**  
444804



# Sanderson

handtufted  
100% recycled PET yarns  
total weight: ca 2600 gr/m²  
total height: ca 11 mm

available sizes:  
140 x 200 4'7" x 6'7"  
160 x 230 5'3" x 7'6"  
200 x 280 6'7" x 9'2"  
250 x 350 8'2" x 11'6"  
no custom sizes

water resistant & easy to clean

Like the cross section of a truffle, this archive design is made from lines of pin dots on a spotted ground. A lovely mix of texture and tone, use as a coordinate to the entire Sanderson range.



**Truffle olive**  
446007



**Truffle sandstone**  
446003







# Sanderson

handtufted  
100% recycled PET yarns  
total weight: ca 2600 gr/m<sup>2</sup>  
total height: ca 11 mm

available sizes:  
140 x 200 4'7" x 6'7"  
160 x 230 5'3" x 7'6"  
200 x 280 6'7" x 9'2"  
250 x 350 8'2" x 11'6"  
no custom sizes

water resistant & easy to clean

Originating in Brazil, the Calathea or 'Prayer Plant' was a favourite for illustration in the late 19<sup>th</sup> century due to its remarkable decorative foliage. Elegant and strikingly detailed, this rug from Sanderson creates a striped pillar of abundant tropical leaves.



**Calathea samphire**  
445617



# Sanderson

handtufted  
100% recycled PET yarns  
total weight: ca 2600 gr/m<sup>2</sup>  
total height: ca 11 mm

available sizes:  
140 x 200 4'7" x 6'7"  
160 x 230 5'3" x 7'6"  
200 x 280 6'7" x 9'2"  
250 x 350 8'2" x 11'6"  
no custom sizes

water resistant & easy to clean

Designed to harmonize with nature, this MANILA outdoor rug will bring a touch of tranquility and freshness to your outdoor space.



Manila Artichoke  
446407







# Sanderson

handtufted  
100% recycled PET yarns  
total weight: ca 2600 gr/m<sup>2</sup>  
total height: ca 11 mm

available sizes:  
140 x 200 4'7" x 6'7"  
160 x 230 5'3" x 7'6"  
200 x 280 6'7" x 9'2"  
250 x 350 8'2" x 11'6"  
no custom sizes

water resistant & easy to clean

Founded in 1860, Sanderson is renowned for its iconic florals and explosive botanicals, hand drawn and inspired by the quintessential English garden. From Arthur Sanderson's Soho Square showroom, where he began selling his unique style of wall-paper some 160 years ago, Sanderson has risen to become one of the most influential names in interior design.



**Dandelion Clocks ochre silver**  
445803



# Sanderson

handtufted  
100% recycled PET yarns  
total weight: ca 2600 gr/m<sup>2</sup>  
total height: ca 11 mm

available sizes:  
140 x 200 4'7" x 6'7"  
160 x 230 5'3" x 7'6"  
200 x 280 6'7" x 9'2"  
250 x 350 8'2" x 11'6"  
no custom sizes

water resistant & easy to clean

The KASURI design was originally inspired by an Uzbek robe, woven with pre-printed warps to create a beautifully blurred motif.



Kasuri indigo  
446208







# Morris & Co.

handtufted  
100% recycled PET yarns  
total weight: ca 2600 gr/m<sup>2</sup>  
total height: ca 11 mm

available sizes:  
140 x 200 4'7 x 6'7"  
160 x 230 5'3 x 7'6"  
200 x 280 6'7 x 9'2"  
250 x 350 8'2 x 11'6"  
no custom sizes

water resistant & easy to clean

Vigorous fluid curves and an unmistakable energy mark this iconic William Morris pattern from 1875. This folding design is translated onto rugs - for use in indoor or outdoor spaces – in two harmonious organic palettes.



**Acanthus indigo**  
427318



**Acanthus nettle-sky blue**  
427307



# Morris & Co.

handtufted  
100% recycled PET yarns  
total weight: ca 2600 gr/m²  
total height: ca 11 mm

available sizes:  
140 x 200 4'7 x 6'7"  
160 x 230 5'3 x 7'6"  
200 x 280 6'7 x 9'2"  
250 x 350 8'2 x 11'6"  
no custom sizes

water resistant & easy to clean

Our BLACKTHORN outdoor rug, inspired by the timeless design of J.H. Dearle, seamlessly brings the allure of a classic print to your patio or garden. Elevate your outdoor decor with this iconic piece that not only captures the essence of historical elegance, but also promises to withstand the test of time.



**Blackthorn tump**  
428507



**Blackthorn wheat**  
428501







# Morris & Co.

handtufted  
100% recycled PET yarns  
total weight: ca 2600 gr/m<sup>2</sup>  
total height: ca 11 mm

available sizes:  
140 x 200 4'7" x 6'7"  
160 x 230 5'3" x 7'6"  
200 x 280 6'7" x 9'2"  
250 x 350 8'2" x 11'6"  
no custom sizes

water resistant & easy to clean

Enjoy nature and the great outdoors with Morris & Co.'s delightful range of outdoor rugs. Adorning these hardy rugs is a selection of iconic designs inspired by archival documents from the Arts & Crafts legend. Weather-proof and garden-ready, these rugs add classic patterning to terraces, balconies, gardens and patios. Crafted with UV stability and water resistance technology, enjoy the outdoors with comfort and unforgettable design, all year round.



**Willow Boughs leafy arbor**  
428607



# Laura Ashley

handtufted  
100% recycled PET yarns  
total weight: ca 2600 gr/m²  
total height: ca 11 mm

available sizes:  
140 x 200 4'7" x 6'7"  
160 x 230 5'3" x 7'6"  
200 x 280 6'7" x 9'2"  
250 x 350 8'2" x 11'6"  
no custom sizes

water resistant & easy to clean

Inspired by the rich heritage of the Laura Ashley archive, this beautiful collection of rugs has been created to complete the timeless look of the world of Laura Ashley. Lille is a broad stripe design in two tonal colours to create a sophisticated and classic feel. Available in three colour compositions.



Lille pale ochre  
480001



Lille sky blue  
480008



Lille dove grey  
480004





# Laura Ashley

handtufted  
100% recycled PET yarns  
total weight: ca 2600 gr/m<sup>2</sup>  
total height: ca 11 mm

available sizes:  
140 x 200 4'7" x 6'7"  
160 x 230 5'3" x 7'6"  
200 x 280 6'7" x 9'2"  
250 x 350 8'2" x 11'6"  
no custom sizes

water resistant & easy to clean

---

Launched in 1987 as a fabric part of the Laura Ashley Home Collection, the LILITH is an abstract design which features an array of colourful flowers like chrysanthemums, tulips and roses.



**Lilith poppy red**  
480100



# Laura Ashley

handtufted  
100% recycled PET yarns  
total weight: ca 2600 gr/m²  
total height: ca 11 mm

available sizes:  
140 x 200 4'7" x 6'7"  
160 x 230 5'3" x 7'6"  
200 x 280 6'7" x 9'2"  
250 x 350 8'2" x 11'6"  
no custom sizes

water resistant & easy to clean

The timelessly elegant print PORCHESTER was inspired by a piece of antique fabric and added to the Laura Ashley archive in 1990. Whatever the weather, this vibrant Poppy Red rug adds energy wherever you like!



Porchester poppy red  
480200







# Laura Ashley

handtufted  
100% recycled PET yarns  
total weight: ca 2600 gr/m<sup>2</sup>  
total height: ca 11 mm

available sizes:  
140 x 200 4'7" x 6'7"  
160 x 230 5'3" x 7'6"  
200 x 280 6'7" x 9'2"  
250 x 350 8'2" x 11'6"  
no custom sizes

water resistant & easy to clean

This charming design is a repeat print of blooming daisies in a fresh and friendly colour combination. Crafted with quality in mind, this rug not only adds a touch of Laura Ashley's elegance but also provides comfort and durability for everyday enjoyment.



Thorncliff Daisy sky blue  
480308



# Collection Overview

## Zona



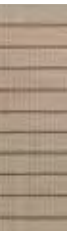
Zona Stitch  
terra  
497303



Zona Stitch Runner  
terra  
497303



Zona Stitch  
olive  
495707



Zona Stitch Runner  
olive  
495707



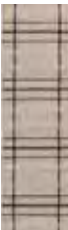
Zona Line  
sesame  
497601



Zona Line Runner  
sesame  
497601



Zona Line  
charcoal  
497605



Zona Line Runner  
charcoal  
497605



Zona Block Stripe  
cashew  
497501



Zona Block Stripe  
Runner cashew  
497501



Zona Check  
denim  
497408



Zona Check Runner  
denim  
497408

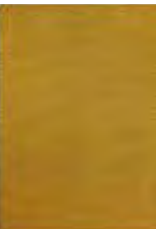
## Lace



Lace  
white sand  
497009



Lace  
sage grey-white sand  
497201



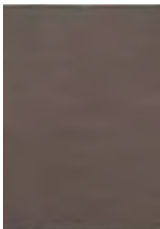
Lace  
golden mustard  
497006



Lace  
golden mustard-grey  
taupe 497217



Lace  
thyme-pine  
497207



Lace  
grey taupe  
497004



Lace Tricolore  
white-sand-mango  
496901



Lace Tricolore  
terra-rust-green  
496903

## Lace Tricolore

## Deck



Lace Tricolore  
thyme-grey-pink  
496904



Deck  
spring green  
496607



Deck  
electric blue  
496708



Deck  
charcoal black  
496805



Festival Stripe  
yellow  
496516



Festival Stripe  
orange  
496513



Festival Stripe  
blue  
496518



Festival Dots  
olive green  
495817

## Habitat Festival



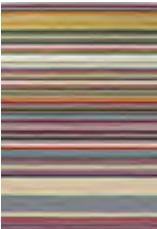
Festival Dots  
red  
495800



Festival Round  
yellow  
496306



Festival Round  
aqua  
496308



LaVida  
476801



Aura grey  
477304



Aura ochre  
477306



Linear Stem  
orange  
464403



Linear Stem  
olive  
464407

## Orla Kiely



Solid Stem  
seagrass  
464507



Stripy Stem  
azure  
464308



Sycamore  
dill  
464207



Sycamore  
black  
464205



Unikko 60<sup>th</sup>  
Anniversary green  
433007



T Monogram  
light brown  
455811



T Monogram  
jade green  
455807



T Monogram  
dusted pink  
455802

## Marimekko

## Ted Baker

## Scion



Botanical Tulip  
burgundy  
455610



Houndstooth  
mustard  
455706



Houndstooth  
washed blue  
455708



Dhurrie  
green  
426307



Dhurrie  
blue  
426318



Moqui  
green  
426507



Rosehip  
blue  
426718



Nuevo  
blush  
426102

## Harlequin



Rivi  
kiwi  
426908



Tree tops  
green  
443807



Melora  
pink  
443202



Melodic  
ochre-gold  
443606



Melodic  
blue  
443608



Ixora  
emerald-palm-  
chartreuse 442007



Trattino  
sea glass  
444804



Truffle  
olive  
446007

## Sanderson

## Morris & Co.



Truffle  
sandstone  
446003



Calathea  
samphire  
445617



Manila  
artichoke  
446407



Dandelion Clocks  
ochre silver  
445808



Kasuri  
indigo  
446208



Acanthus  
nettle-sky blue  
427307



Acanthus  
indigo  
427318



Blackthorn  
wheat  
428501

## Laura Ashley



Blackthorn  
tump  
428507



Willow Boughs  
leafy arbor  
428607



Lille  
pale ochre  
480001



Lille  
sky blue  
480008



Lille  
dove grey  
480004



Lilith  
poppy red  
480100

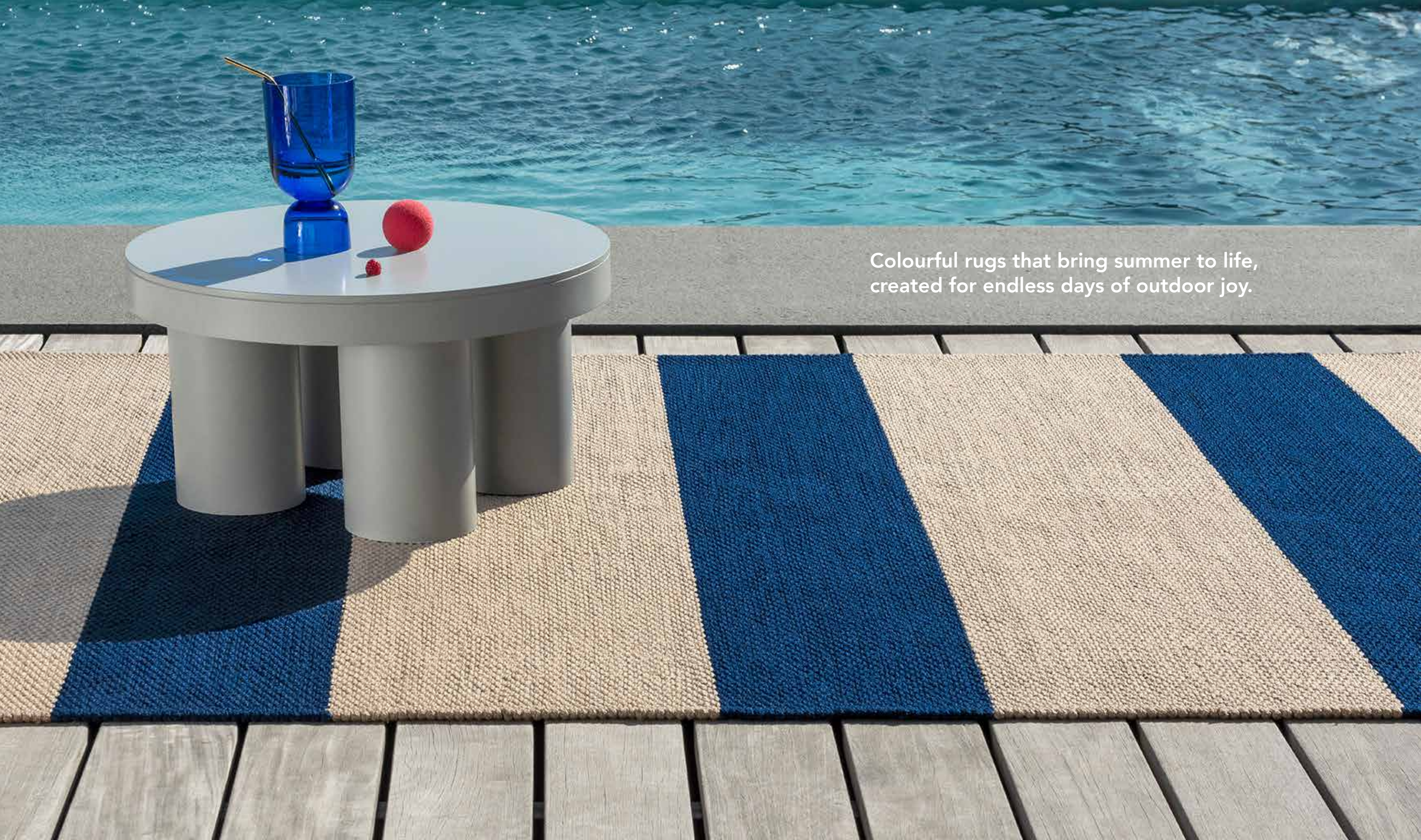


Porchester  
poppy red  
480200



Thorncliff Daisy  
sky blue  
480308





Colourful rugs that bring summer to life,  
created for endless days of outdoor joy.



# BRINK & CAMPMAN

Albert Schweitzerstraat 3  
7131 PG Lichtenvoorde | The Netherlands  
tel +31 (0)544 390 400  
brinkandcampman.com  
info@brinkandcampman.com



## Sales offices

The Netherlands:	tel + 31 (0)544 390 422
Europe:	tel + 31 (0)544 390 429
Germany, Austria, Switzerland:	tel + 31 (0)544 390 430
Americas, Asia, Africa, Oceania:	tel + 31 (0)544 390 428

## The Netherlands, Germany, Austria & Switzerland

Robert Apeldoorn  
m +31 (0)6 101 329 64  
rapeldoorn@brinkandcampman.com

## Export

Jasper Kempers  
m +31 (0)6 128 157 72  
jkempers@brinkandcampman.com

We have partners in the following countries:

Australia	Greece	Portugal
Austria	Hong Kong	Romania
Azerbaijan	Hungary	Serbia
Belgium	Ireland	Singapore
Bolivia	Italy	Slovakia
Brazil	Japan	South Africa
Bulgaria	Kazakhstan	South-East Asia
Canada	Korea	Spain
China	Kuwait	Sweden
Colombia	Latvia	Switzerland
Czech Republic	Lithuania	Ukraine
Denmark	Malta	United Kingdom
Estonia	Mexico	USA
France	New Zealand	
Finland	Norway	
Germany	Poland	

## Colofon

### editorial

Studio Brink & Campman

### collection design

Studio Brink & Campman

### photography

Studio Sterkenburg  
Studio Floor Knaapen  
David in den Bosch

### styling

Studio Brink & Campman

### graphic design

Studio Brink & Campman

### print

Drukkerij Roelofs

We take reservations for printing errors,  
colour differences, or changes in the collections.

All rights are reserved.

© 2025 Brink & Campman



BY APPOINTMENT TO THE COURT OF THE NETHERLANDS





**B&C**

At Brink & Campman we make collections of thoughtfully designed premium rugs. Brink & Campman has over 125 years of experience doing so. The craft of rug making means that no two rugs are exactly alike. The materials used in a handcrafted product might cause deviations in colour, texture or size.

This catalogue has been created with great care. We make allowance for a degree of colour variation and cannot be held responsible for any printing errors or changes in the collection.







BY APPOINTMENT TO THE COURT OF THE NETHERLANDS

**B&C**

Albert Schweitzerstraat 3  
7131 PG Lichtenvoorde | the Netherlands  
tel +31 (0)544 390 400  
[brinkandcampman.com](http://brinkandcampman.com)  
[info@brinkandcampman.com](mailto:info@brinkandcampman.com)

